



Broadmore



**Broadmore** Model number: 230BM28443B

**3 beds • 2 baths • 1232 sq.ft. • 28' width • 44' depth**

Our home building facilities invest in continuous product and process improvements. Plans, dimensions, features, materials, specifications and availability are subject to change without notice or obligation. Renderings and floor plans are representative likenesses of our homes and may differ from the actual homes. We invite you to tour a Home Center near you and inspect the highest value in quality housing available or call (208) 733-7755 to speak with a Home Consultant. Copyright 2017, CMH. All rights reserved.

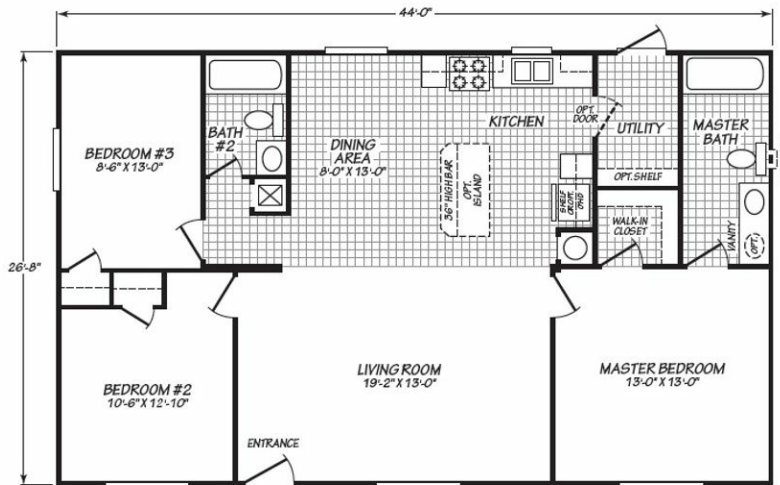
<https://www.claytonhomesofidaho.com>

**CLAYTON HOMES-TWIN  
FALLS**

21360 HIGHWAY 30  
FILER, ID 83328

Monday - Thursday: 9am - 7pm  
Friday: 9am - 6pm  
Saturday: 9am - 5pm  
Sunday: Closed

(208) 733-7755



## MODEL 28443B

3 Bedroom • 2 Bath • 1,173 Square Feet



**Broadmore** Model number: 230BM28443B

**3 beds • 2 baths • 1232 sq.ft. • 28' width • 44' depth**

Our home building facilities invest in continuous product and process improvements. Plans, dimensions, features, materials, specifications and availability are subject to change without notice or obligation. Renderings and floor plans are representative likenesses of our homes and may differ from the actual homes. We invite you to tour a Home Center near you and inspect the highest value in quality housing available or call (208) 733-7755 to speak with a Home Consultant. Copyright 2017, CMH. All rights reserved.

<https://www.claytonhomesofidaho.com>

### CLAYTON HOMES-TWIN FALLS

21360 HIGHWAY 30  
FILER, ID 83328

Monday - Thursday: 9am - 7pm  
Friday: 9am - 6pm  
Saturday: 9am - 5pm  
Sunday: Closed

(208) 733-7755