



# The Berkshire



## The Berkshire Model number: 230BS24523B

**3 beds • 2 baths • 1248 sq.ft. • 24' width • 52' depth**

Our home building facilities invest in continuous product and process improvements. Plans, dimensions, features, materials, specifications and availability are subject to change without notice or obligation. Renderings and floor plans are representative likenesses of our homes and may differ from the actual homes. We invite you to tour a Home Center near you and inspect the highest value in quality housing available or call (208) 733-7755 to speak with a Home Consultant. Copyright 2017, CMH. All rights reserved.

<https://www.claytonhomesofidaho.com>

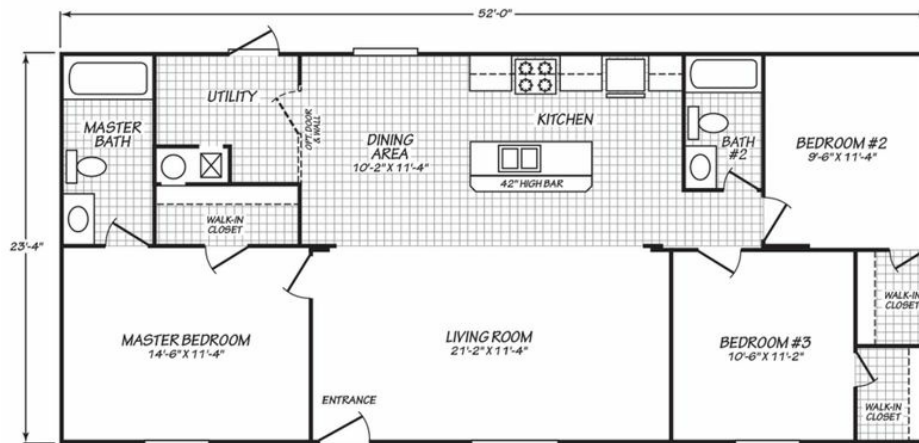
## CLAYTON HOMES-TWIN FALLS

21360 HIGHWAY 30  
FILER, ID 83328

Monday - Thursday: 9am to 6pm  
Friday: 9am to 6pm  
Saturday: 9am to 5pm  
Sunday: Closed

(208) 733-7755

## BERKSHIRE



MODEL: **24523B**  
 24 x 52 1,213 Sq.Ft  
 3 Bedroom 2 Bathroom

Due to continued improvements and material change, specifications may change without notice. Room sizes are approximate.

## The Berkshire Model number: 230BS24523B

**3 beds • 2 baths • 1248 sq.ft. • 24' width • 52' depth**

Our home building facilities invest in continuous product and process improvements. Plans, dimensions, features, materials, specifications and availability are subject to change without notice or obligation. Renderings and floor plans are representative likenesses of our homes and may differ from the actual homes. We invite you to tour a Home Center near you and inspect the highest value in quality housing available or call (208) 733-7755 to speak with a Home Consultant. Copyright 2017, CMH. All rights reserved.

<https://www.claytonhomesofidaho.com>

### CLAYTON HOMES-TWIN FALLS

21360 HIGHWAY 30  
 FILER, ID 83328

Monday - Thursday: 9am to 6pm  
 Friday: 9am to 6pm  
 Saturday: 9am to 5pm  
 Sunday: Closed

(208) 733-7755