



The Ponderosa



The Ponderosa

Model number: 230TW28603S

3 beds • 2 baths • 1680 sq.ft. • 28' width • 60' depth

Our home building facilities invest in continuous product and process improvements. Plans, dimensions, features, materials, specifications and availability are subject to change without notice or obligation. Renderings and floor plans are representative likenesses of our homes and may differ from the actual homes. We invite you to tour a Home Center near you and inspect the highest value in quality housing available or call (208) 733-7755 to speak with a Home Consultant. Copyright 2017, CMH. All rights reserved.

<https://www.claytonhomesofidaho.com>

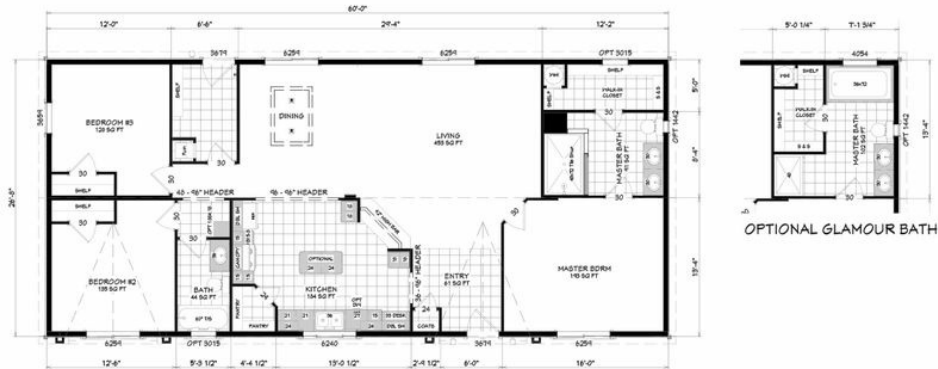
CLAYTON HOMES-TWIN FALLS

21360 HIGHWAY 30
FILER, ID 83328

Monday - Thursday: 9am to 6pm
Friday: 9am to 6pm
Saturday: 9am to 5pm
Sunday: Closed

(208) 733-7755

TIMBERWOOD



MODEL: **THE PONDEROSA 28603S**

28'-0" x 60'-0" 1,600 Sq.Ft

3 Beds 2 Baths

Due to continued improvements and material change, specifications may change without notice. Room sizes are approximate.

The Ponderosa Model number: 230TW28603S

3 beds • 2 baths • 1680 sq.ft. • 28' width • 60' depth

Our home building facilities invest in continuous product and process improvements. Plans, dimensions, features, materials, specifications and availability are subject to change without notice or obligation. Renderings and floor plans are representative likenesses of our homes and may differ from the actual homes. We invite you to tour a Home Center near you and inspect the highest value in quality housing available or call (208) 733-7755 to speak with a Home Consultant. Copyright 2017, CMH. All rights reserved.

<https://www.claytonhomesofidaho.com>

CLAYTON HOMES-TWIN FALLS

21360 HIGHWAY 30
FILER, ID 83328

Monday - Thursday: 9am to 6pm
Friday: 9am to 6pm
Saturday: 9am to 5pm
Sunday: Closed

(208) 733-7755